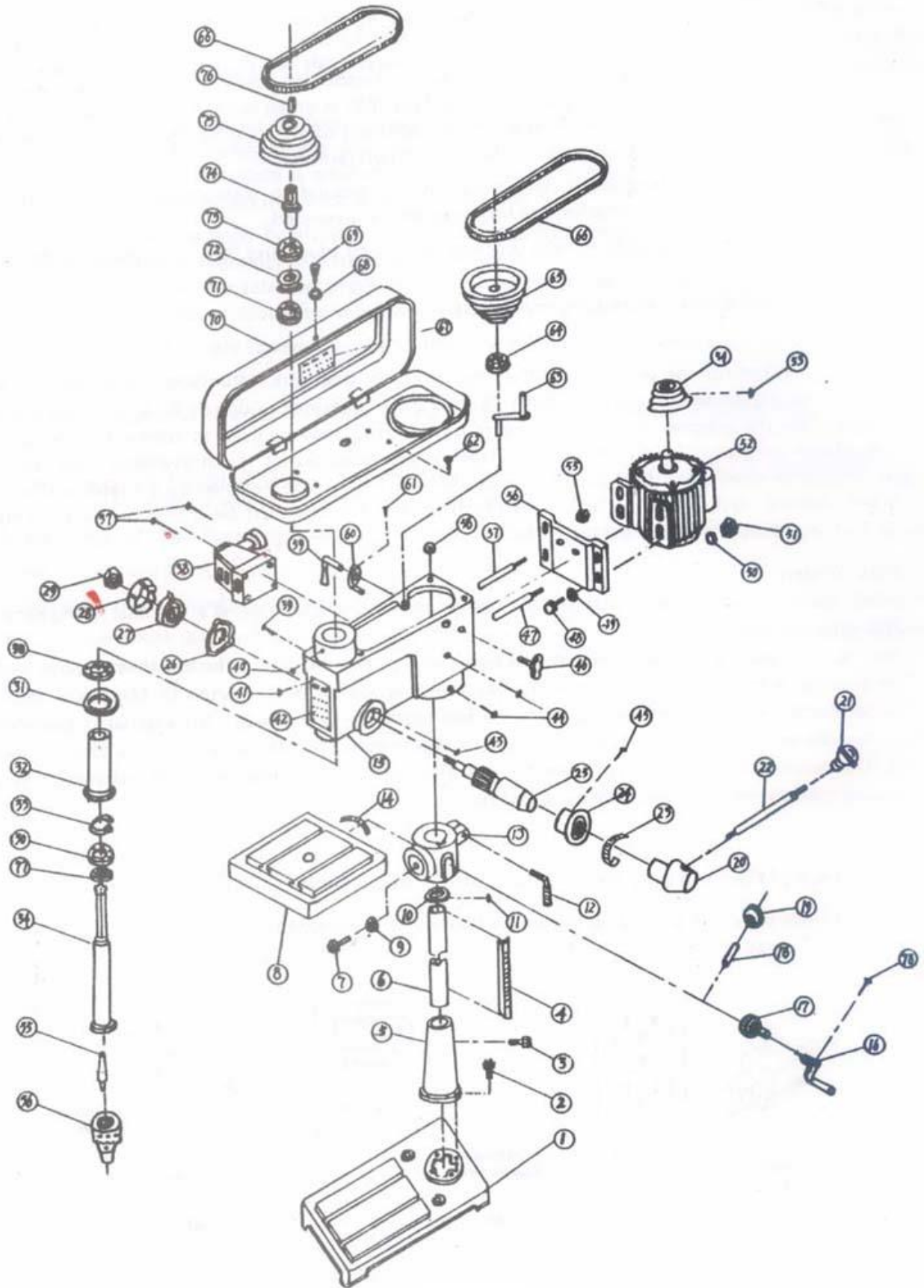


DRILL PRESS DIAGRAM - MODEL : DP1100W25





HEAVY DUTY DRILL PRESS

MODEL : DP1100W25

SPARE PARTS LIST

| No | Description | No | Description | No | Description |
|----|---------------------------|----|-------------------------|----|-----------------------|
| 1 | Base | 28 | Spring Cover | 57 | Shaft |
| 2 | Bolt | 29 | Nut | 58 | Rubber Washer |
| 3 | Bolt | 30 | Bearing | 59 | Adjusting Handle |
| 4 | Teeth | 31 | Ring | 60 | Adjusting Pin |
| 5 | Flanged Column Base | 32 | Spindle Socket | 61 | Screw |
| 6 | Column | 33 | Washer | 62 | Bolt |
| 7 | Bolt | 34 | Spindle | 63 | Pulley Spindle |
| 8 | Working Table | 35 | Tappered Spindle Tip | 64 | Bearing |
| 9 | Washer | 36 | Chuck | 65 | Pulley |
| 10 | Ring | 37 | Screw | 66 | V-Belt (A686 & A710) |
| 11 | Bolt | 38 | Switch | 67 | Speed Changing Lable |
| 12 | Locking Handle | 39 | Fixing Screw | 68 | Washer |
| 13 | Working Table Holder | 40 | Bolt | 69 | Lifting Handle |
| 14 | Angle Scale | 41 | Name Plate Fixing Rivet | 70 | Pulley Cover |
| 15 | Housing | 43 | Bolt | 71 | Bearing |
| 16 | Handle | 44 | Fixing Screw | 72 | Ring |
| 17 | Worm | 45 | Fixing Screw | 73 | Bearing |
| 18 | Pin | 46 | Fixing Bolt | 74 | Keyway Spindle |
| 19 | Gear | 47 | Adjusting Shaft | 75 | Spindle Pulley |
| 20 | Handle Seat | 48 | Bolt | 76 | Key |
| 21 | Handle Tip | 49 | Washer | 77 | Bearing |
| 22 | Handle Scale | 50 | Washer | 78 | Locking Nut |
| 23 | Depth Scale | 51 | Nut | 79 | Switch Seat |
| 24 | Depth Indicator | 52 | Motor | | Big Holder |
| 25 | Feeding Shaft / Motor Fan | 53 | Fixing Screw | | 150MFD/250V condenser |
| 26 | Spring Seat | 54 | Motor Pulley | | Tools |
| | Spring | 55 | Nut | | |
| 27 | Spring With Spring Cover | 56 | Motor Fixing Plate | | |